

Presentation at the Marine Insurance Day 2013

September 27, 2013

Transportation of Perishables: Fresh Produce

Tiina Medel
President EIMC



Who is EIMC ?

We are an independent company of professional consultants and adjusters, specialized in marine related transportation risks, and founded over 50 years ago with headquarters based in New Jersey, USA.

We have extensive experience assisting clients with the investigation of cargo claims as well as the development and implementation of risk management programs.



What are perishables?



Evaluating fresh fruits & vegetables

- ❖ Color
- ❖ Pulp temperature
- ❖ Stems
- ❖ Firmness
- ❖ Shrivel
- ❖ Split skins
- ❖ Decay and mold



Tools of the trade



zoom



Risk factors and considerations

- ❖ Inherent qualities
- ❖ Pre-shipment condition
- ❖ Temperature abuse
- ❖ Delay
- ❖ Contamination
- ❖ Physical damage



Inherent qualities

- ❖ Climacteric or non-climacteric
- ❖ Region of origin – chill prone?
- ❖ Varietal differences
- ❖ Recommended storage conditions
- ❖ Shelf life



Other pre-shipment factors

- ❖ Susceptibility to diseases and pests
- ❖ Field and mechanical scarring
- ❖ Category 1 or below
- ❖ Pack dates
- ❖ Post harvest / pre-shipment storage
- ❖ Growing season

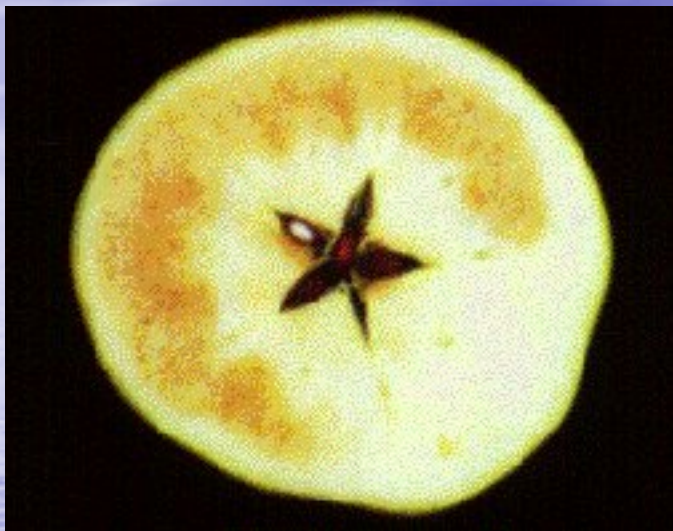


Temperature

- ❖ Key factor in determining post-harvest condition
- ❖ Actual condition of fruit
- ❖ Temperature record
- ❖ Stowage



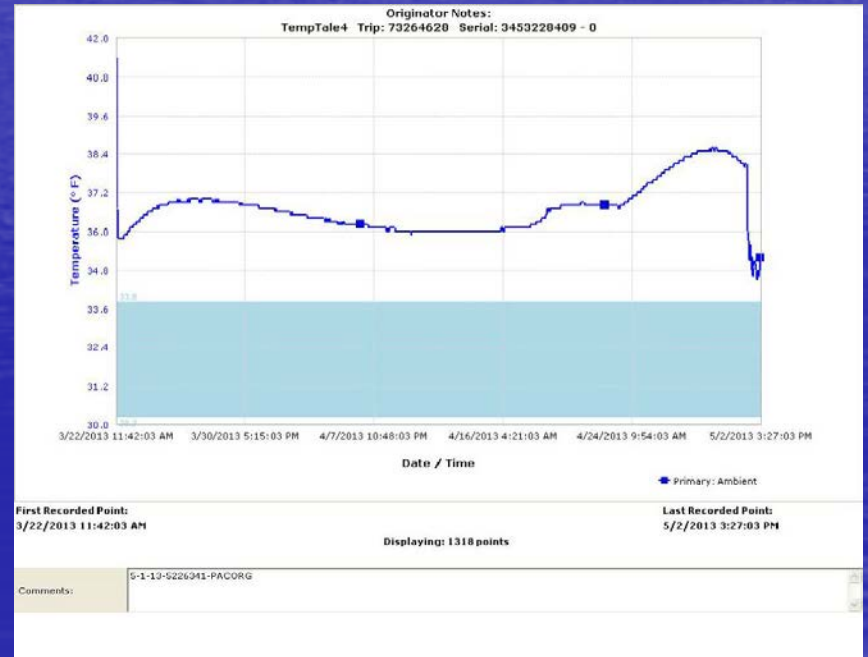
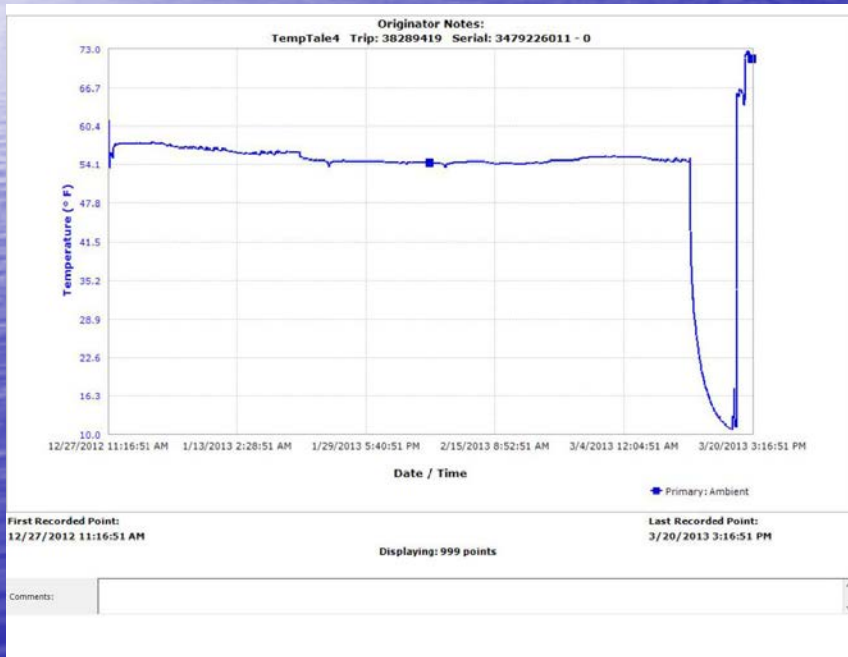
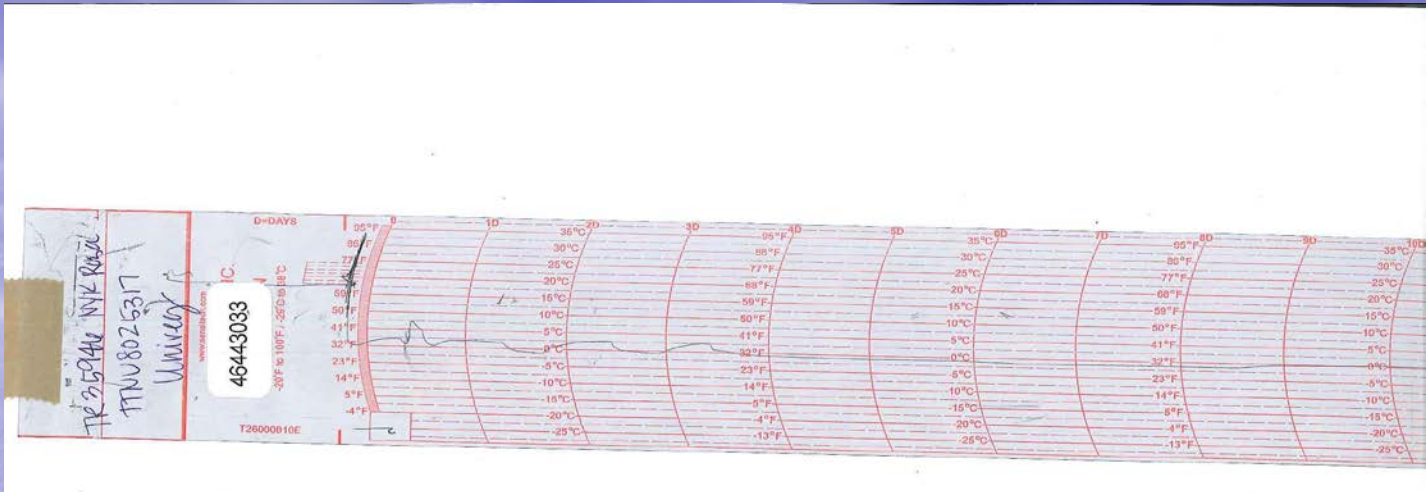
Chill damage



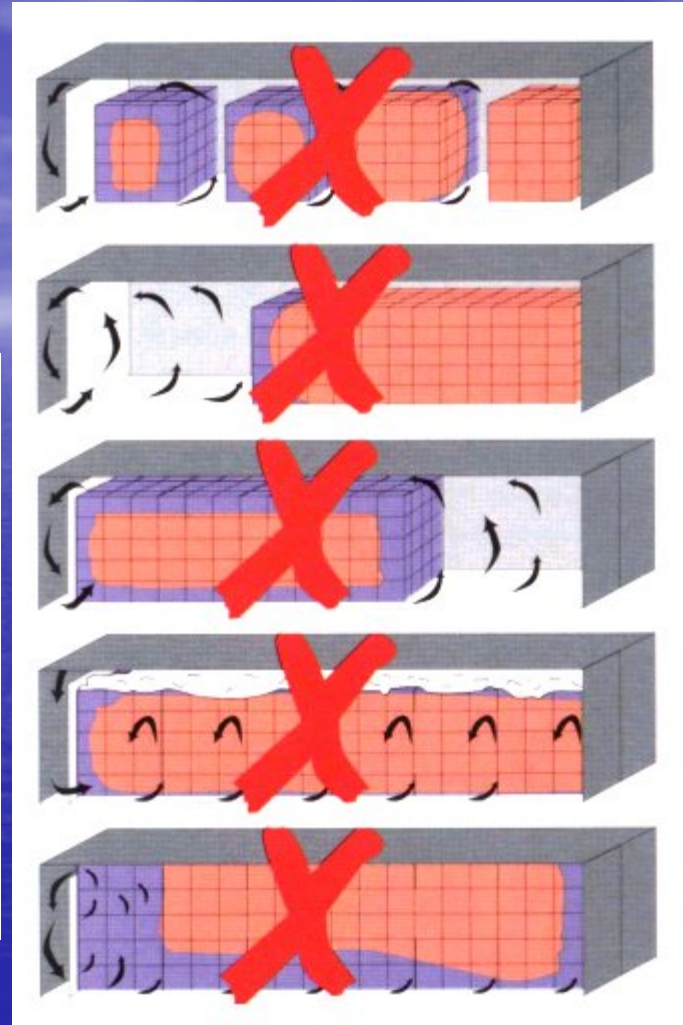
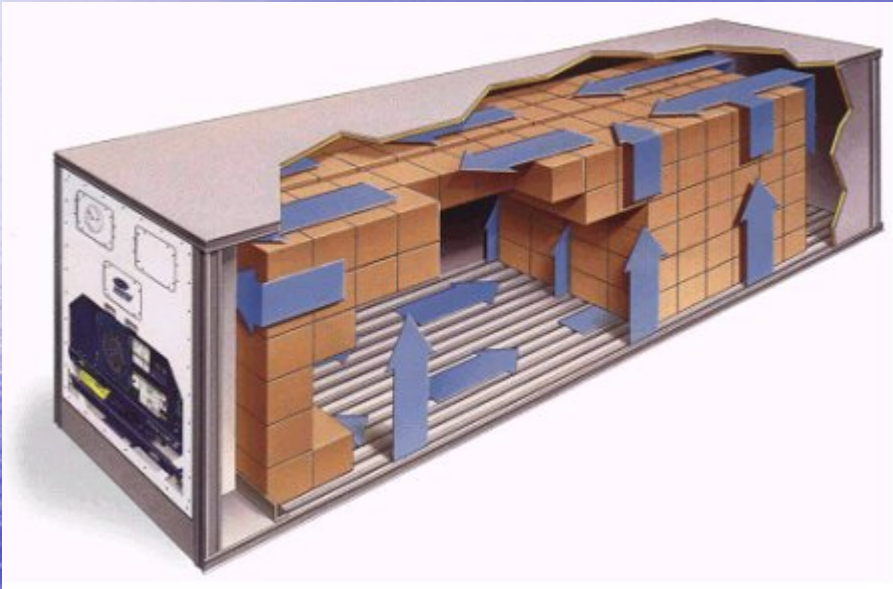
Temperature records

PARTICULARS FURNISHED BY SHIPPER - CARRIER NOT RESPONSIBLE

MARKS AND NUMBERS	N° OF PKGS. CNTRS.	DESCRIPTION OF PACKAGES AND GOODS	GROSS WEIGHT	MEASUREMENT
THERMOGRAPHS 3462318682, 3462318697 FSCU5663962 SN:T0190751 011853 QTY:1456 CY / CY FCL/FCL TW:5,000.000KGS GW:24,490.000KGS	1	HIGH REEFER 40' CONTAINER SHIPPER'S STOW, LOAD, COUNT AND SEALED 1456 BOXES WITH FRESH MANDARINS. Temperature :0C Humidity :OFF Ventilation :15CBM/H HS CODE: 080520 P.A: 0805.20.10.00 (*)Phone: +1-267-570-2718 <i>E t</i> or +1-215-238-8600 Fax: +1-610-461-3300 COLD TREATMENT <i>a</i> FREIGHT <i>r</i> COLLECT *VENTILATION 15 CMH AND HUMIDITY OFF AS PER SHIPPER'S / RECEIVER'S INSTRUCTIONS". "CONTAINER RECEIVED WITH RETURN TEMPERATURE OF DEGREES CELSIUS. CARRIER'S OBLIGATION IS LIMITED ONLY TO MAINTAIN THE SETTING AIR TEMPERATURE OF 0 DEGREES CELSIUS AS PER SHIPPERS / RECEIVERS WRITTEN INSTRUCTION, CONDITION AND Service Coverage CONTAINER YARD in CALLAO (LIMA), PERU CONTAINER YARD in PORT ELIZABETH (NEW JERSEY), Continued on Appendix to BL Nr CHIW24ABFT500	24,490.000KGS	0.000CBM
SHIPPERS DECLARED VALUE \$(IF NOT DECLARED, LIABILITY LIMIT APPLIES AS PER CLAUSE 16.):				



Stowage



Delay

- ❖ Transshipment delays
- ❖ Cold treatment, fumigation, inspections



Contamination

- ❖ Direct contact with contaminant
- ❖ Odor contamination
- ❖ Exposure to filthy environment
- ❖ Breach of seals



Physical damage

- ❖ Impact damages etc.
- ❖ Water damage
- ❖ Theft / loss



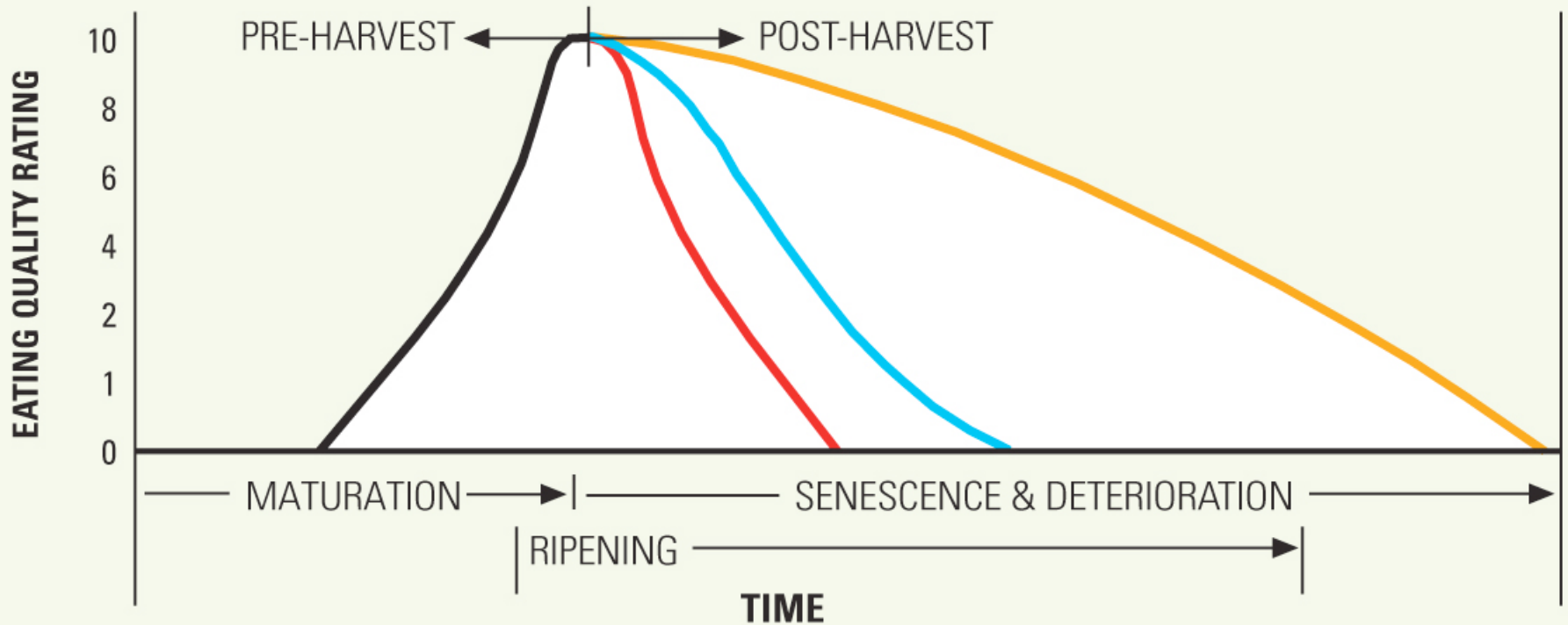
Controlled Atmosphere

- ❖ Not all CA systems are equal
- ❖ Usually no record available
- ❖ Determining effects is difficult



Fig. A – Ripening Control Comparisons

- NO CONTROL
- TEMPERATURE CONTROL ONLY
- TEMPERATURE AND ATMOSPHERE CONTROL

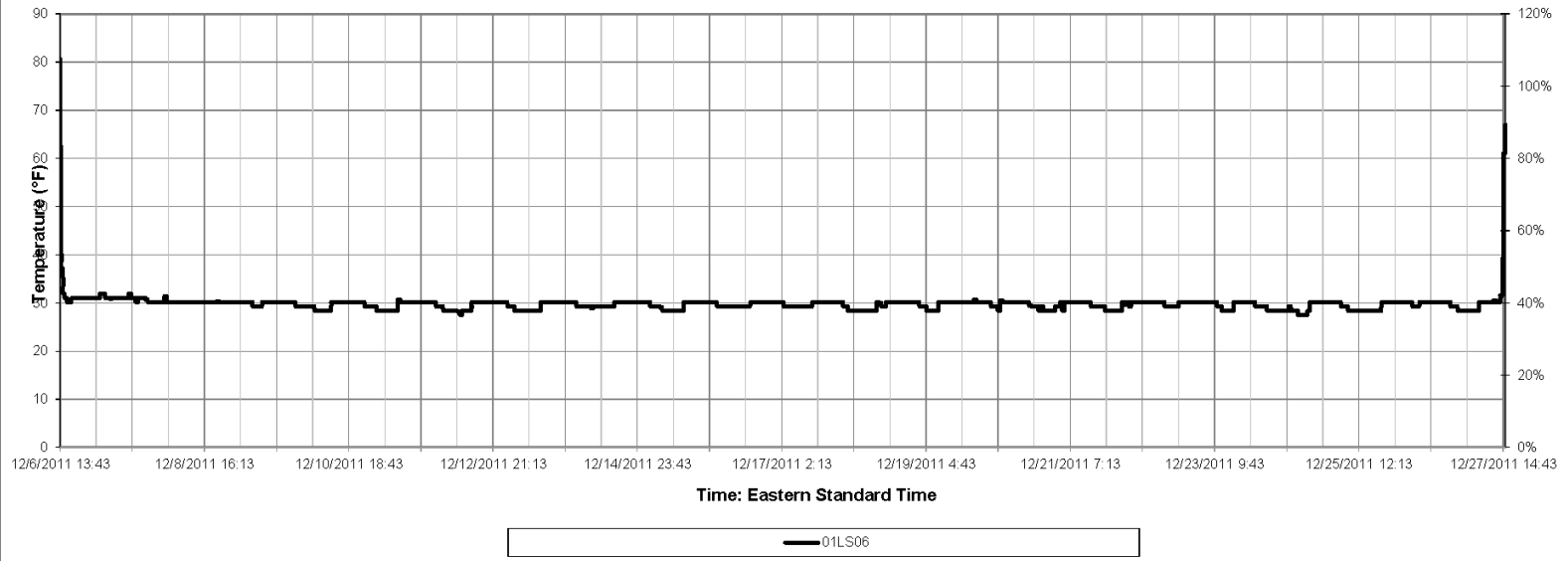


Controlled Atmosphere



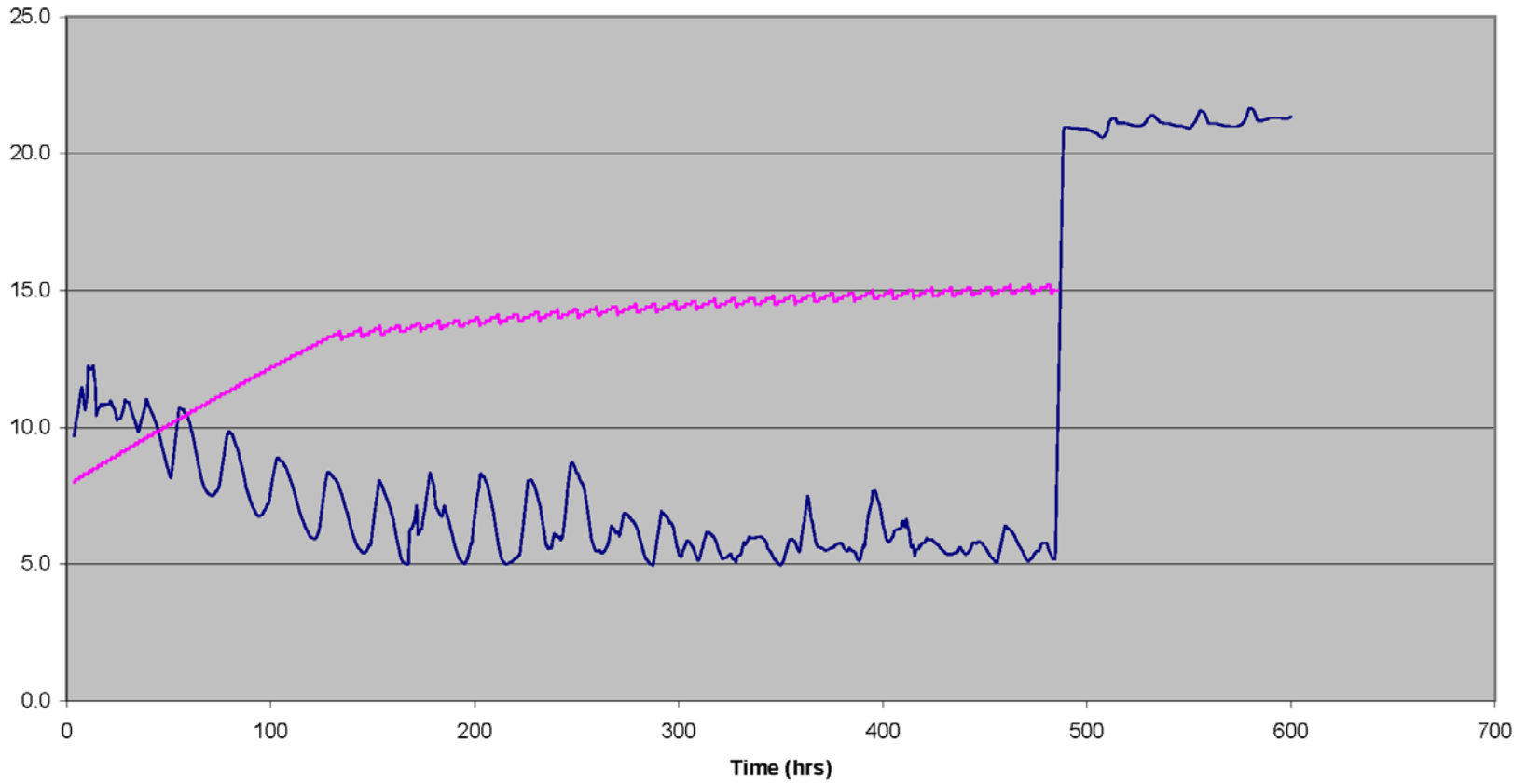
Notes:

Label ID: 01LS06

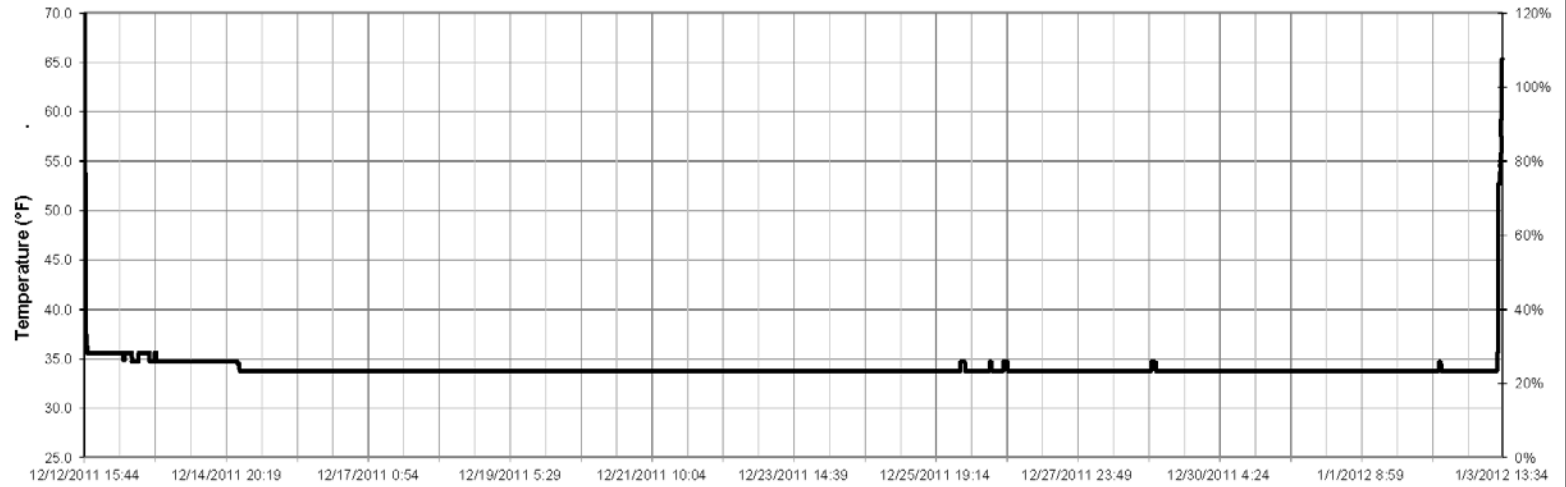


TRIU8190208 (CT002950124)

O2% calc. CO2%



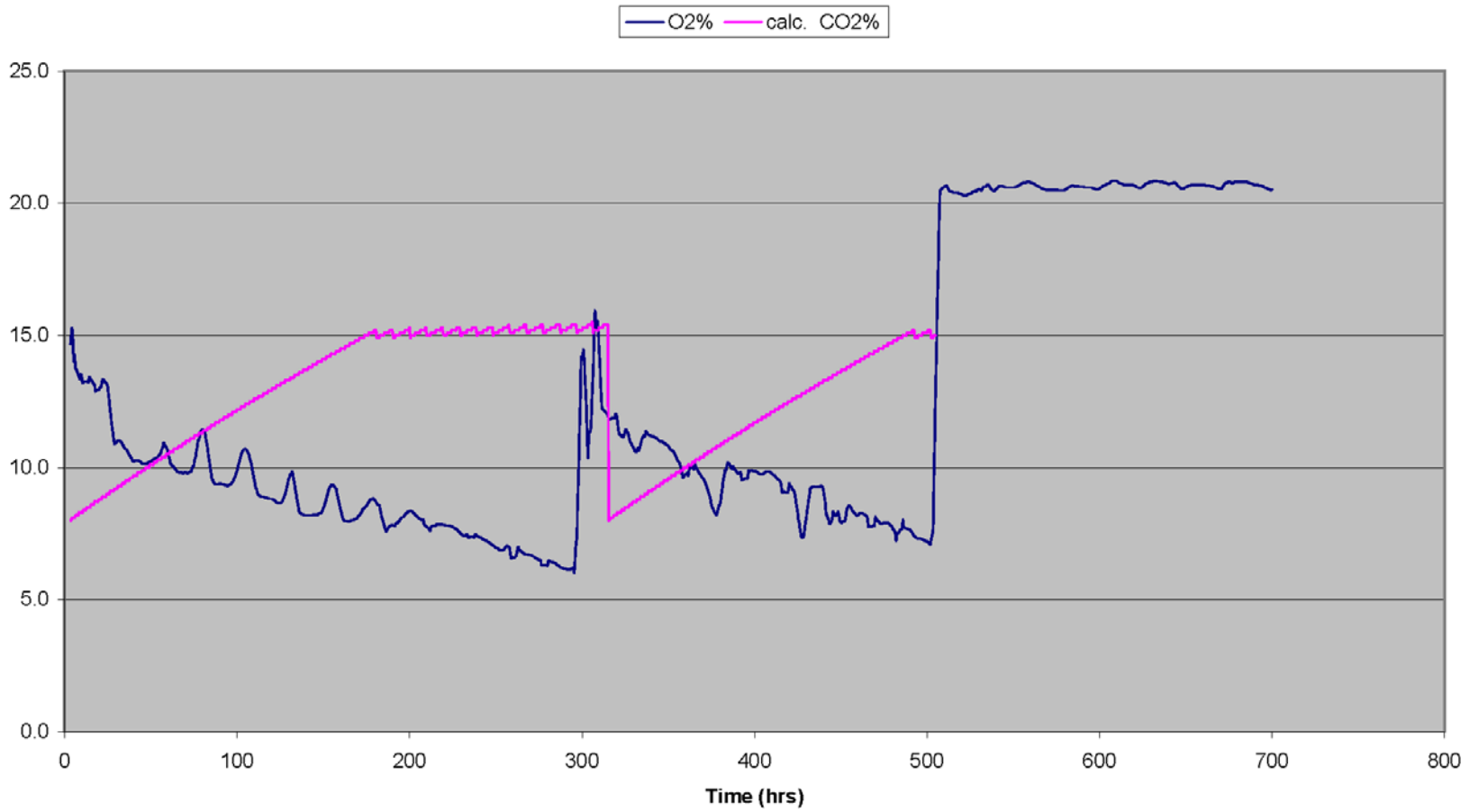
Label ID: 01LT2Q



Time: (GMT-05:00) Eastern Time (US & Canada) (Standard time)
(Daylight savings time may affect time stamps).

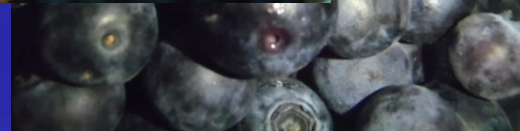
01LT2Q

APRU6132042 (CT005983013)





02122011



Valuation

- ❖ Sound market value versus invoice value
- ❖ Other considerations
 - Sorting / inventory
 - Destruction / disposal
 - Unincurred expenses



Thank you for your attention

Tiina Medel

EIMC

111 Town Square Place, Suite 1412

Jersey City, NJ 07310-1755, USA

O: +1 201 963 3355

D: +1 201 942 1200

M: +1 551 998 6330

Tiina.medel@eimc.com

www.eimc.com

